

A photograph of a person standing in the middle of a paved street lined with tall palm trees. The person is holding a large, spherical object that has a color gradient from red at the top to blue at the bottom. The background shows a clear blue sky and the street receding into the distance.

# CHROMA

CELEBRATING THE PURITY AND  
INTENSITY OF COLOUR

PRIVATE VIEW: THURSDAY 8<sup>TH</sup> AUGUST, 6-8PM  
EXHIBITION DATES: 9<sup>TH</sup> AUGUST - 28<sup>TH</sup> SEPTEMBER

Rhodes Contemporary Art is proud to present our Summer Group Show 'CHROMA'; a celebration of the purity and intensity of colour.

The show brings a host of international emerging artists to the gallery, as well as a selection of blue chip works, all investigating use of colour and its importance within visual art.

The lineup includes; Chris Rivers, Danny Gretcher, Lino Lago, Jan Kalab, James Joyce, Zoe Grace, Nick Smith, Jess Cochran, Julio Anaya Cabanding...

Throughout history, artists have used colour to express emotions and convey feelings that perhaps go beyond what can be explained in imagery alone. Certain colours create different responses in the viewer. They can invoke a feeling of unease, calm or even excitement. An artists' choice and use of colour can have a huge impact on how their work is perceived. In this exhibition, we take a selection of artists and look beyond their imagery alone, investigating their choices of colour, how they have used them, and how we, as the viewer, respond to them.

We are excited to introduce several new artists to the Rhodes Contemporary roster.

# LINO LAGO



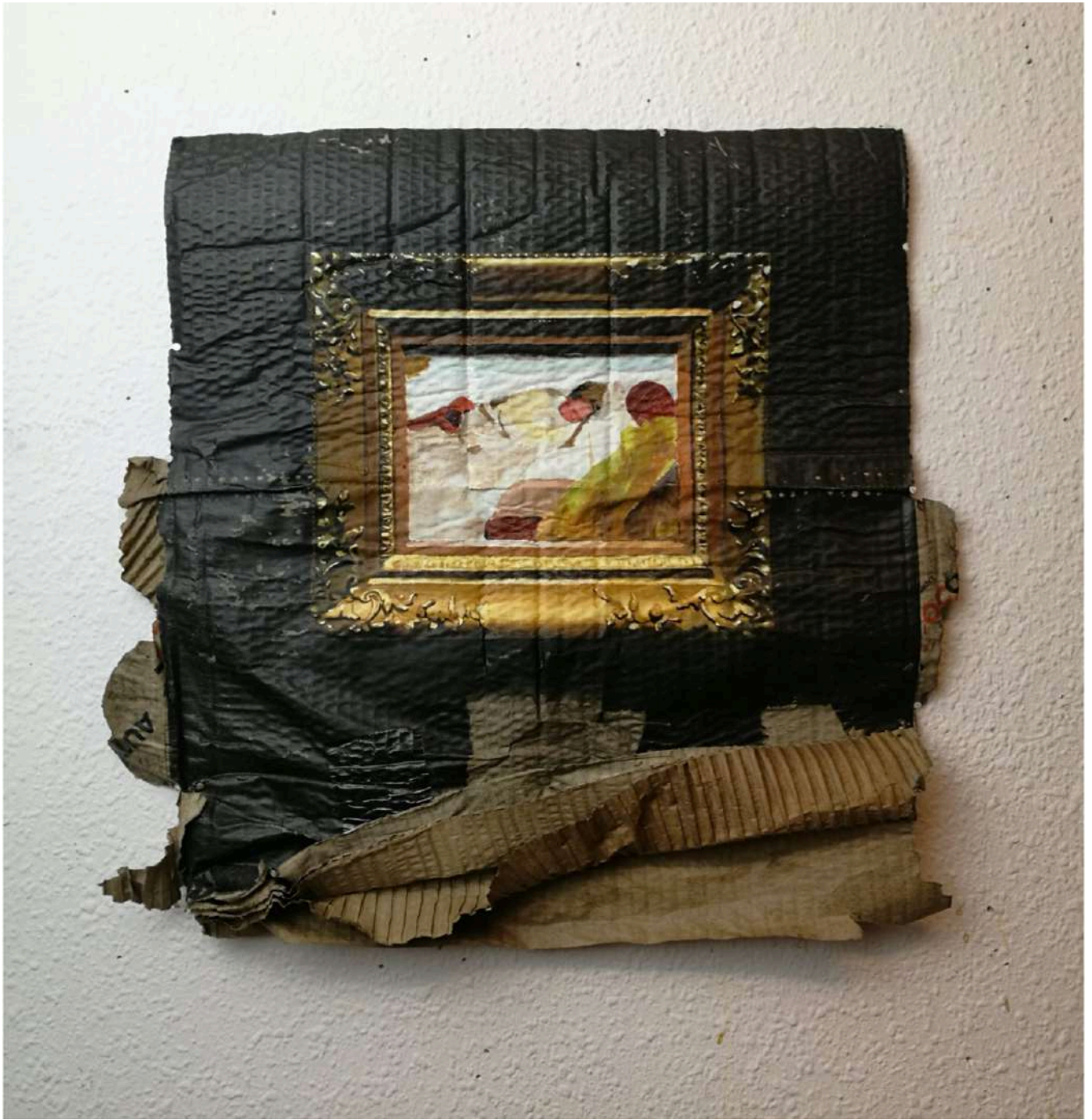
**Lino Lago** takes traditional European painting styles, and gives them a contemporary twist with his bold use of block colour. Sections of portraits playfully peek through abstract lines in the colour blocks, combining transition with what appears to be a digital rendering to create something entirely new. We are excited to have Lago involved in the show, building up to his solo set for next spring.

# JAN KALAB



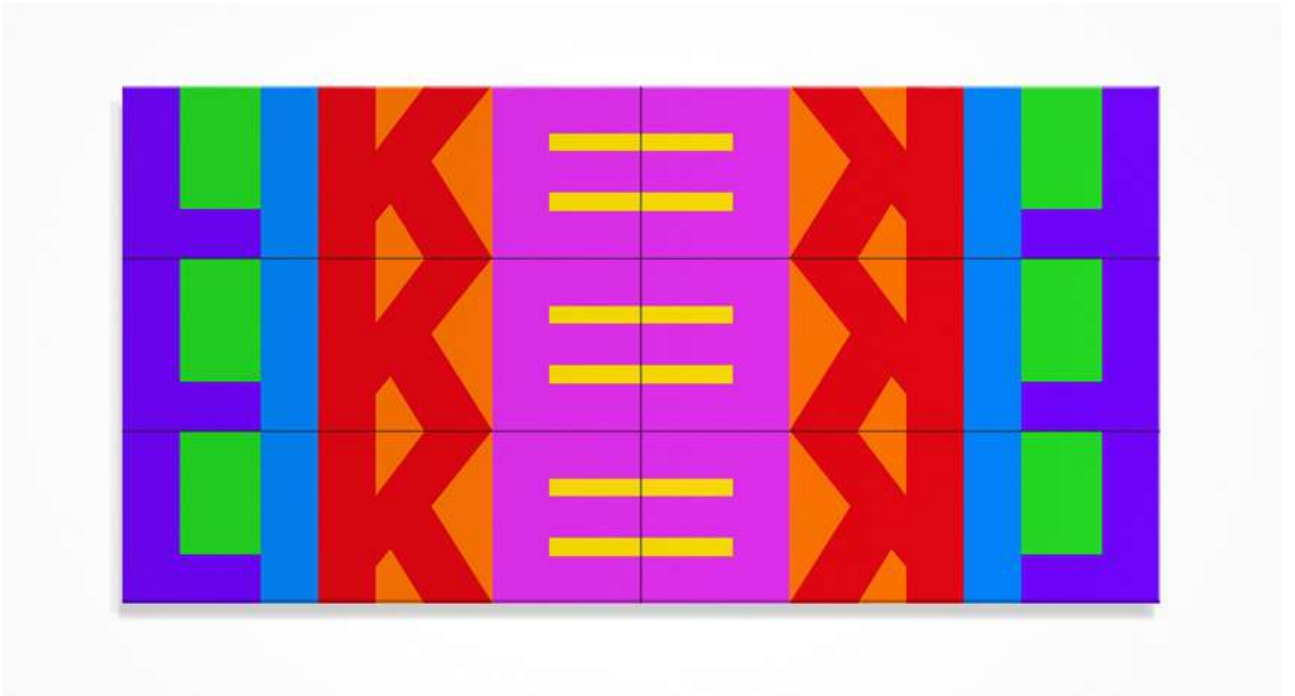
Czechoslovakian born artist **Jan Kalab** has had an impressive career trajectory, having started as a graffiti artist in the 90s, he quickly became an internationally recognised name on the scene. Over the years this developed into a more abstracted style; he started to use colourful squares and circles as a vocabulary for infinite variations around depth, time, and motion. His work is known for its clean shapes and beautiful colour combinations, creating something both organic and otherworldly. Kalab also has a solo show planned at the gallery in 2020.

# JULIO ANAYA CABANDING



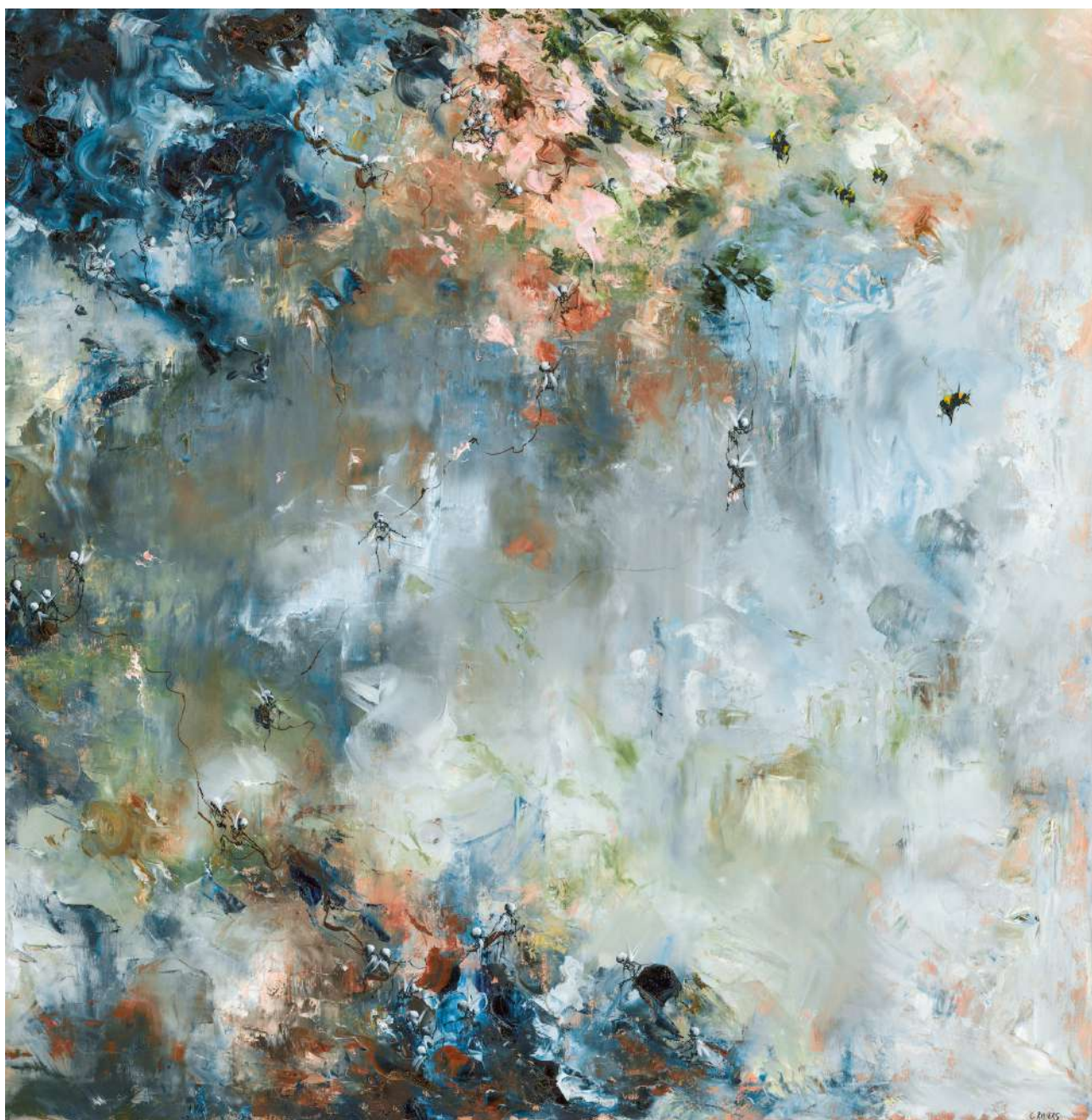
Inspired by the work of old masters, Madrid-based artist **Julio Anaya Cabanding** frees famous paintings from museum walls and brings them to the urban environment. Working on found materials such as cardboard or wood, Cabanding reworks iconic paintings with minute detail to juxtapose them against an urban 'low brow' setting.

# JAMES JOYCE



We are excited to add **James Joyce** to this summer's lineup. Having featured at Banksy's Dismayland, Joyce's work has a wit and graphic style which is instantly recognisable. His bold abstracted clowns and typographic works are a comment on modern society, repeating the word 'LIKE' which has become synonymous with success.

# CHRIS RIVERS



**Chris Rivers** is a contemporary painter from Manchester. Having played drums in a rock band for many years, in 2016 Rivers turned his creativity to fine art, creating beautiful, dreamlike landscapes of clouds, cherubs and the occasional demon. His works use colour to create an overall mood of tranquillity, it is only when the viewer looks closer that they see darker scenes in the details.

# DANNY GRETCHER



German artist **Danny Gretcher**'s work is both ancient and contemporary, layering mark making, etching, scribbling, writing, spray paint and painting to create something entirely unique. His works hold a folk like quality, mixing muted tones with bright colours to create surreal textures.

# JESS COCHRANE



**Jess Cochrane**'s work reflects upon insecurity and perfectionism in the modern age. She plays on the idea of pop culture and its roots that are planted in both displaying and disguising parts of ourselves. Her use of colour comments on what is thought of as 'feminine' and reclaims these colours as powerful.

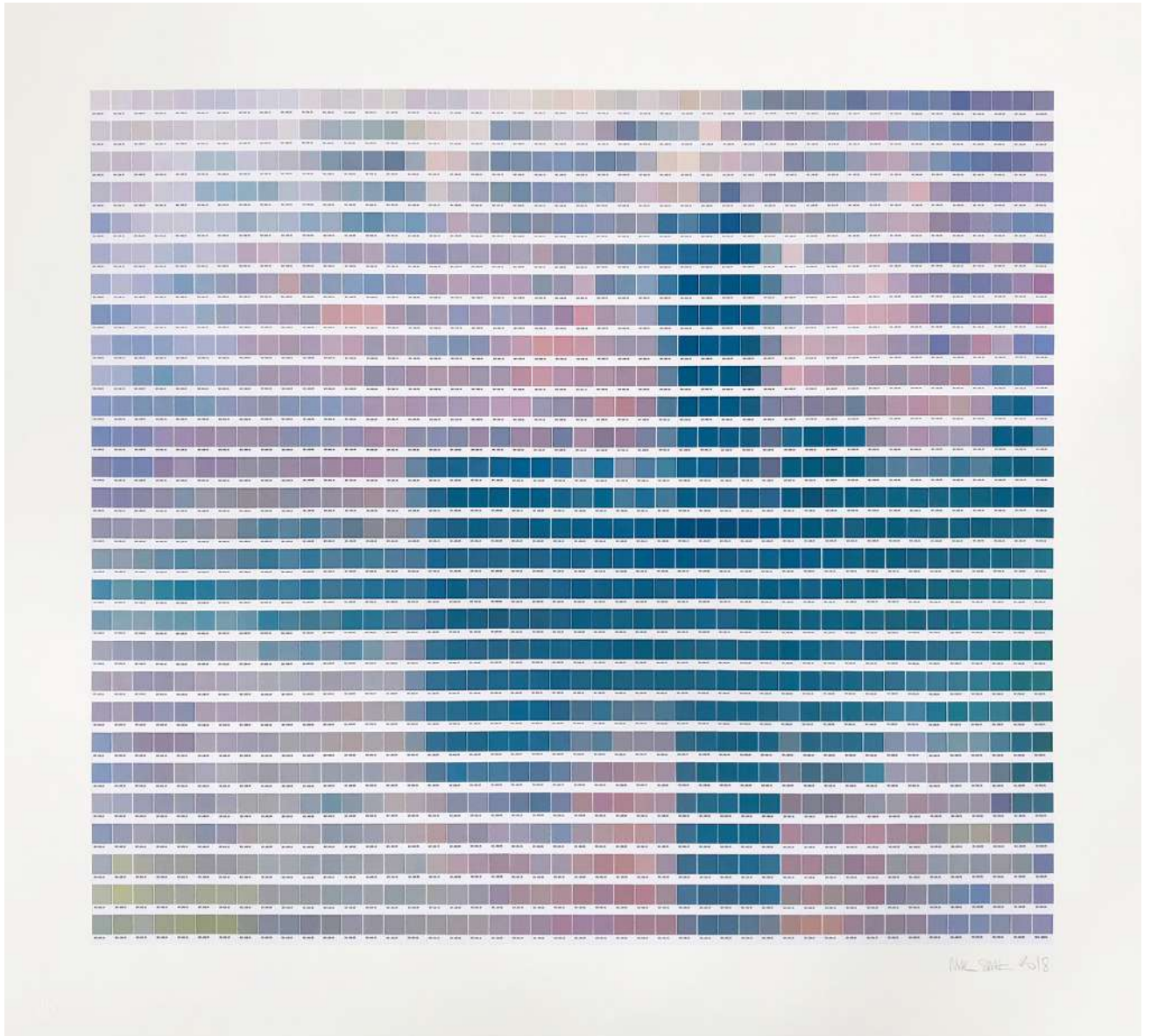


# STEPHEN ORMANDY



**Stephen Ormandy** says his work is born of the subconscious mind. He plays with colours and shapes, creating a rhythm in the positive and negative spaces. His use of colour combinations set his work apart, bringing together light and dark, bright and muted, he forces the viewer to look at the shapes and colours in comparison to those around them; appreciating how they change when placed next to one another.

# NICK SMITH



**Nick Smith's** work marries digital design with fine art, exploring the relationship between audience, image and text. After deconstructing an image, Smith undertakes extensive research to annotate each colour swatch with a word. Evolving from word/colour association, Smith often includes a linear narrative to subvert or support the context of each image, creating an additional layer of information in his work. It is this contextual interplay that engages the viewer with Smith's thought provoking work, encouraging further contemplation.

# ZOE GRACE



**Zoe Grace** has been creating her neon signwork for over a decade. Known for their beautiful sentiments and thought provoking statements, her use of coloured neon bring the words to life, helping them radiate within the viewer.

For more information on the show, to arrange a viewing or interview with any of the artists involved, please contact us:

[lauren@rhodescontemporaryart.com](mailto:lauren@rhodescontemporaryart.com)

02072407909

RHODES, 42 New Compton Street, WC2H 8DA